

april 2011

## THE WINDS OF SPRING

Standing in a field facing a howling snowstorm is miserable any way you slice it. Standing in a field, almost getting knocked over by the wind of spring is great, invigorating, exciting. It's the time of year when everything pops out in all shades of green. Life becomes a new photo op around every corner.

## 150 years of HISTORY in one WEBSITE

**BILLEBERGA STATION**  
HISTORIEN OM EN STATION OCH EN JÄRNVÄG

vilkommen stationen banan historia blog om oss/kontakt

Missa inte artikeln om Billeberga station i senaste numret av SKÅNSKA JÄRNVÄGAR

**Om denna sajten**  
"Nya Billeberga"  
Det är många lägenheter som hör de ordet från kundölen under åren. Billeberga byggs som en byggnadsstation. En station som var större än vad samhället kanske behövde. En station som var en viktig länk i järnvägssystemet. En station som nu, 140 år efter sin tillkomst, fortfarande är en vital kommunikationsknotpunkt. Denna webbplats är tillägnad Billeberga station, då och nu. [Läs mer här.](#)

**Vi behöver din hjälp!**  
Målar är ett här samlar så mycket information som möjligt om Billeberga station och banorna som gick mot Landskrona, Helsingborg och Eslöv (id LÅNK). Har du bilder eller information, gammalt eller nytt, som kan passa in? Vi är alltid på jakt efter mer material om stationen och banan. [Läs mer här.](#)

**Tranför information**  
Ladda ner skånska järnvägsbiljetter!  
Skånska järnvägsbiljetter!  
Skånska järnvägsbiljetter!  
Skånska järnvägsbiljetter!

**Resor med tåg**  
Tåget tar pendlar till jobbet och skolan. Tåget tar skollungdomarna till gymnasieskolan och universitet. Tåget tar dig om kvällen på vägen eller långt bort. Tåget kan ta dig från Billeberga eller stationen närmast dig till platser som Stockholm, Navia, Berlin, Moskau, Monaco eller Istanbul. Tåget är också ett bra sätt att resa.

Här några länkar för resoplanering eller järnvägshistoriska:  
Skånska järnvägen - Skånska järnvägen länkar samman Skåne med tåg och buss  
Skånska järnvägen - Öresundståget är ett gemensamt tågtrafiksystem i Sydsvenske och Danmark  
Sj - En bredare perspektiv - Sverige och några utländska destinationer  
Västia - Västia är ett tågtrafik på flera sträckor i Sverige  
Östia - Östia är ett tågtrafik på flera sträckor i Sverige  
Tyskland - Tyskland är ett tågtrafik, har en omfattande resoplanering och täcker hela Europa  
Järnvägsnet - guiden till Sveriges tåg och järnvägar  
Skånska järnvägen - Använd på Öresund - Sveriges bästa normalspåriga museijärnväg  
Sveriges Järnvägsmuseum - Järnvägshistoria att se och göra, färes i Angelholm och Gäddede  
Skånska järnvägen - Skånska järnvägsbiljetter forum tåg  
Järnvägshistoriska forum - Järnvägsmusei Vänernas forum för historiskt om järnväg

**ÅVGÅENDE TAG - DEPARTURES**

Tåg	Till	Tid	Tåg	Till
05:55 Myte	1	1233	Barnvaktstuga 624 i Reslöv	
06:54 Helsingborg C	1	1235	Barnvaktstuga 624 i Reslöv	
06:55 Myte	1	1232	Barnvaktstuga 624 i Reslöv	
07:03 Myte	1	1237	Barnvaktstuga 624 i Reslöv	
07:54 Helsingborg C	1	1254	Barnvaktstuga 624 i Reslöv	
07:55 Myte	1	1259	Barnvaktstuga 624 i Reslöv	
08:04 Helsingborg C	1	1256	Barnvaktstuga 624 i Reslöv	
08:55 Myte	1	1261	Barnvaktstuga 624 i Reslöv	
09:04 Helsingborg C	1	1258	Barnvaktstuga 624 i Reslöv	

**ÅNKOMMANDE TAG - ARRIVALS**

Tåg	Från	Tid	Tåg	Från
04:54 Helsingborg C	1	1233	Åsmundtorps station	
05:54 Helsingborg C	1	1235	Åsmundtorps station	
06:03 Myte	1	1232	Åsmundtorps station	
06:54 Helsingborg C	1	1237	Åsmundtorps station	
07:03 Myte	1	1234	Åsmundtorps station	
07:54 Helsingborg C	1	1259	Åsmundtorps station	
08:03 Myte	1	1256	Åsmundtorps station	
08:54 Helsingborg C	1	1261	Åsmundtorps station	
09:03 Myte	1	1258	Åsmundtorps station	

**Åsmundtorps station**  
Stationen i Åsmundtorp byggdes när banan byggdes och trafikerades från början. Även om den då var en "halvstation" där tågen stannade vid behov för av- och påstigning. Med tiden växte trafiken och stationen fick betydelse.

**Åsmundtorps station**  
Tidtabell från 9 augusti 1865  
Underhållsrapport 1878  
De första loken  
Barnvaktstugan vid Märleholm

**Billeberga: samhället**  
Billeberga är mer än en järnvägsstation. Det är en levande by med en från förtiden. Ett bra ställe att bo och vandra upp. Här hittar du all information om samhället och några länkar. Kom gärna på besök. [Läs mer](#)

BillebergaStation.com (site in Swedish with an English summary) launched recently as the place online for information and images from the railroad station in Billeberga, Sweden. Actually, the scope is bigger than just one station: The site also covers the railroad lines that the station services.

The project springs from research that I have done over the years, starting when I grew up near the station. Now it's time to make that research available to a wider audience.

The site contains valuable information for train travel today, including real-time arrival and departure status, as well as a wealth of history all the way back to when the railroad first came to town, back in 1865.

The thing was, I didn't want to just create another site with a little bit of information and a few pictures. Instead

BillebergaStation.com will grow as more information becomes available. Already, several people have generously contributed information and photos from their collections to make this a truly collaborative effort.

The site design is intentionally very fluid, so that as more information is added, the site can morph to contain the text and pictures, as well as present it all in the best manner for each sub-topic. I am planning several ways for site visitors to interact with the information contained in the underlying database that is the heart of this site. In tech speak, it's a Content Management System (CMS).

In time for the website launch, I also wrote a 12-page article about the

Need  
Sunshine  
for the  
bottom line?

Let us help:  
video film  
photography  
graphic design  
web design  
writing

CALL  
OR  
EMAIL  
TODAY!

film&company.com  
501.235.8185

film&company LLC™

train station that was published in the Swedish magazine *Skånska Järnvägar*. ([www.skanskajarnvagar.se](http://www.skanskajarnvagar.se))

While this particular site is in Swedish, the way it handles content, serving it up in a variety of ways to make it more accessible and keeping it fully searchable, can be put to use in any language and for businesses, non-profits or anyone who needs a site that blends design with content management. The site is also scalable, allowing it to grow seamlessly as the volume of content on the site grows.

That last part is essential, because while I designed the site and am busy researching and writing content for it, I truly don't know where the project will be in size and scope a year from now, and that is the exciting part: to build a website that will grow and mature and take on a life of its own.

## thatbusinessCARD

I recently had lunch with a friend at a restaurant, when the man at the next table came over. He introduced himself and handed us his business card. Now, I'll give him credit for effort in trying to drum up business for his general contracting company. The interruption was very polite, so no points lost there. The restaurant probably has a "no solicitation" policy, but we didn't complain to them.

What stood out to me afterwards as I had a chance to look at the business card was that it lists a company name (no indication if it is incorporated), his name, phone, and what construction services he offers. That's it.

Let's say I want to check him out. There's no address, no website, no indication if licensed or bonded and no references. Sure, I can call him. But I may just want to check things out, not get into an estimate for a job.

My guess is that the return on investment in the business cards he hands out is pretty slim. Certainly having a website would give his business a place people can check out. Maybe see examples of his work and find testimonies. Also learn if he is licenced, registered or bonded as needed. These days a website is the new storefront, which is great for small businesses where the owner and any employees are out doing actual client work during the day ...

## incLOSING

Lots more happening here, but this is all the space for today. Until next time, don't forget to check out my blog at [filmandcompany.com](http://filmandcompany.com).

Finally, with the renewing and dusting off of spring underway, don't forget to call or email. I can help with your media projects, whether updating or creating new.

Happy Easter and stay in touch,



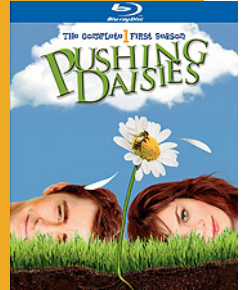
## MOVIEStoWATCH

Actually, this time it is a TV series that ran in an all too short 2 seasons (and abbreviated ones at that):

### PUSHING DAISIES (2007)

Ned: *What if you didn't have to be dead?*  
Chuck: *Well, that would be preferable.*

*Pushing Daisies* is a quirky show set in a hyper-realistic, but oddly dreamlike world that is a little bit Humphrey Bogart and a lot bit Main Street the way we remember it on a Kodachrome day.



There is Ned, the Piemaker, with the rare gift of being able to bring dead things back to life. (First touch—alive again, touch again—dead forever.)

There is Chuck (Charlotte), his childhood sweetheart whom he brought back from the dead.

There is Emerson Cod, the detective who solves crimes with Ned's special help.

And there is Olive, who is, well shall we say, just unique.

This show is about its characters, relationships and what matters in life. In its quirky manner, it packs a lot of truth about life.

So grab a copy of the 2 seasons created before the show was cancelled, sit down and enjoy, preferably in Blu-ray and on a big screen. This is fine story telling, with the Emmys to prove it. Too bad that ABC couldn't get it right on the schedule, instead canceling it prematurely.

